

State of Wyoming Corner Record

In compliance with the CORNER PERPETUATION AND FILING ACT, Wyoming Statutes, 1997 Section 33-29-140 et. seq, and the Rules and Regulations of the Board of Professional Engineers and Professional Land Surveyors)

Reverse side of this form may be used if more space is needed.

Record of original survey and citation of source of historical information (if corner is lost or obliterated). Description of corner monumentation evidence found and/or monument and accessories established to perpetuate the location of this corner. Sketch of relative location of monument, accessories, and reference points with course and distance to adjacent corner(s) (if determined in this survey). Method and rationale for reestablishment of lost or obliterated corner.

G.L.O. RECORD:

VA.16°30'E
90.00 CHAINS AND SET A LIMESTONE
18"X14"X4" BURIED 10" DEEP WITH 1
NOTCH CARVED ON THE SOUTH SIDE
AND 2 NOTCHES CARVED ON THE EAST
SIDE FOR THE CORNER TO SECTIONS
26, 27, 34 AND 35.

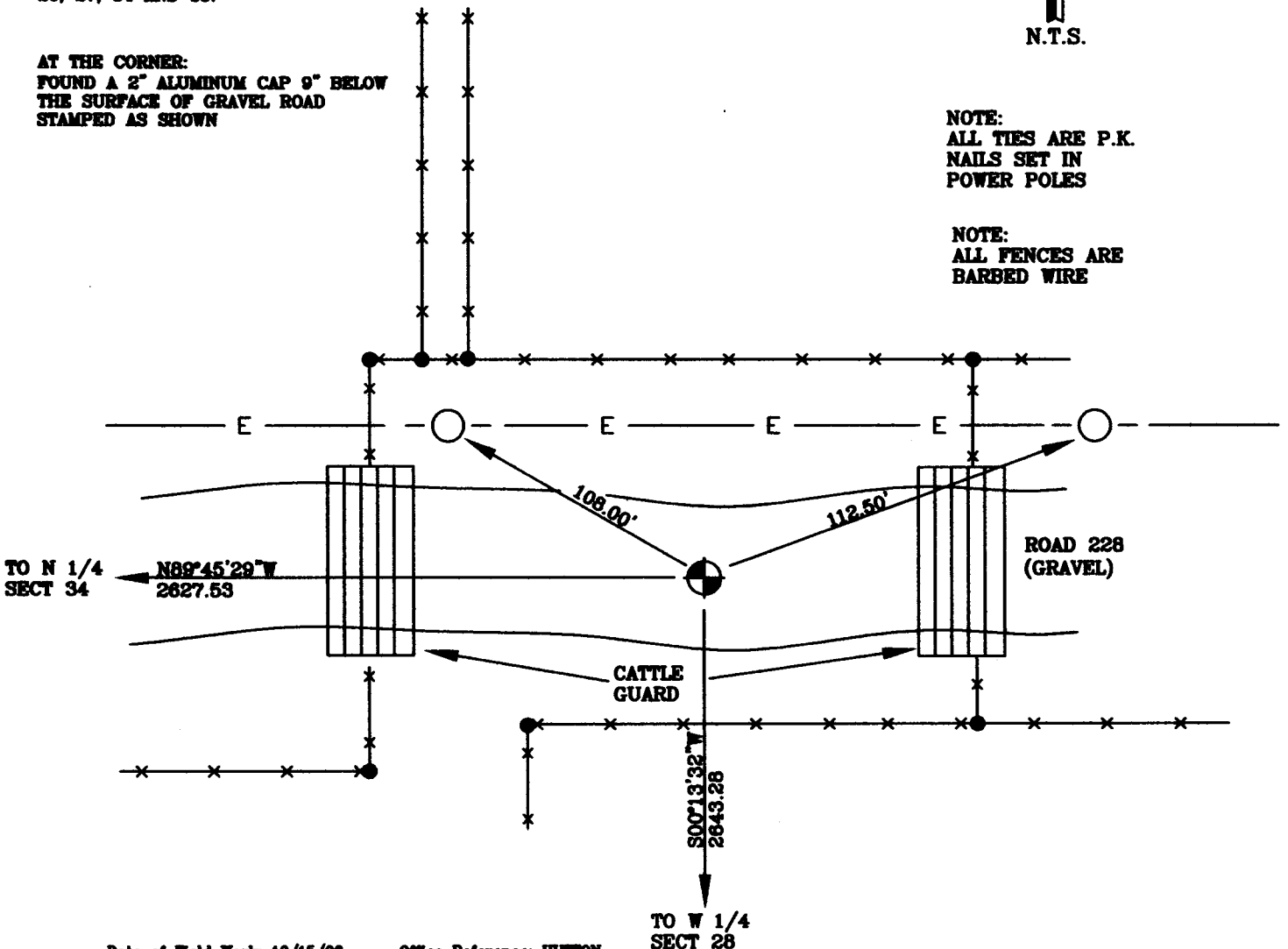
AT THE CORNER:

FOUND A 2" ALUMINUM CAP 9" BELOW
THE SURFACE OF GRAVEL ROAD
STAMPED AS SHOWN



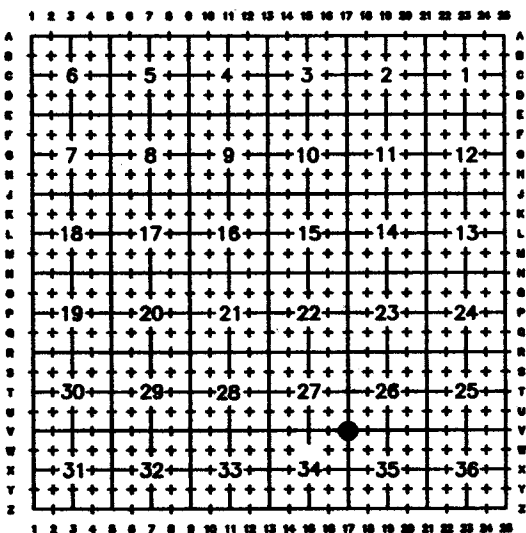
NOTE:
ALL TIES ARE P.K.
NAILS SET IN
POWER POLES

NOTE:
ALL FENCES ARE
BARBED WIRE



Date of Field Work: 10/15/08 Office Reference: HUTTON

Cross Index Plat



Firm/Agency, Address

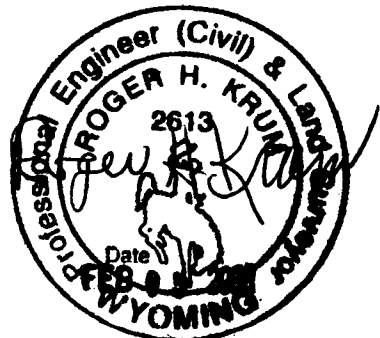
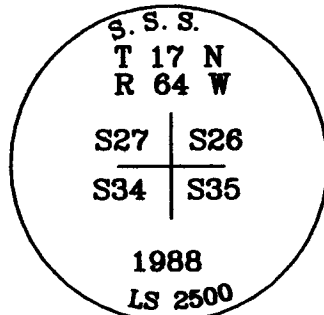
Western R&D, Ltd.
 5809 Yellowstone Rd., Suite B
 Cheyenne, Wyoming 82009

This corner record was prepared
 by me or under my direction
 and supervision.

SEAL & SIGNATURE

Telephone Number: (307) 632-5656

● Denotes Monument Found



Corner Name NORTHEAST CORNER Section 34, T 17 N, R 64 W, 6th P.M.
 County: LARAMIE Wyoming

Cross-Index No.: Y-17

SRPEPLS/PLSW: March 1994; PLSW January 1998